



Luna Facade

Home & Land Package  
**\$620,600\***

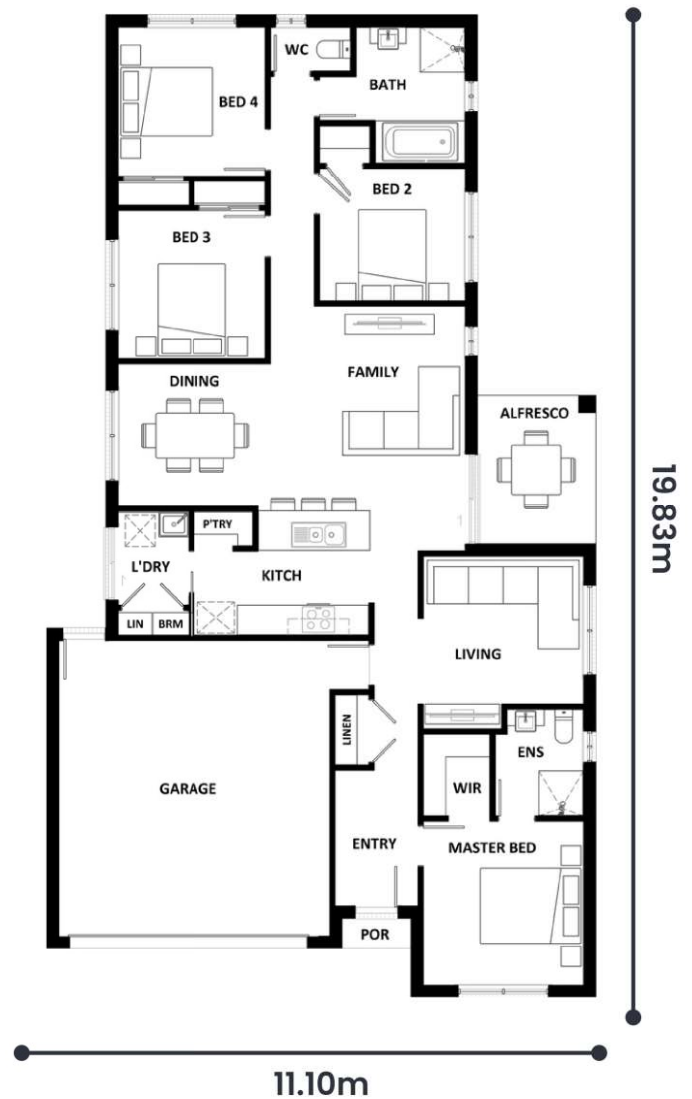


LOT SIZE (m2)	375
FRONTAGE (m2)	12.5
HOME TOTAL (sqsq)	19.33
HOME TOTAL (m2)	179.58

## LOT 340 SUMMERSTONE ESTATE, MORAYFIELD

### Features & Inclusions:

- Engineered 'H1 Class' concrete slab
- 20mm Essastone throughout
- 600mm Artusi appliances
- 2550mm ceiling height
- Square set cornice throughout
- 1500mm freestanding bath
- 50 m2 Exposed aggregate
- 4mm frameless mirrors
- External floor tiles to alfresco & portico
- Facade upgrade included
- Ceiling fans to bedrooms & alfresco
- LED downlights throughout
- 2x Split system air conditioners
- Vinyl plank, carpet & tile flooring throughout
- Built in shelving to all robes and linen
- Shower niches to both showers
- R2.5 Ceiling batts throughout
- Colorbond roof
- Fly screens to all windows and doors



Meaghan Hart | New Homes Sales

0447 339 664

[sales@cheneyconstructions.com.au](mailto:sales@cheneyconstructions.com.au)

\*Dimensions, photographs, floor plans and façade images are approximate and for illustrative purposes only. They are not drawn to scale. The dimensions provided of "width" and "length" are the actual dimensions of the completed house including alfresco areas (where applicable). It is the home owner's responsibility to ensure that all applicable council regulations and estate requirements are met. Subject to land availability, pricing and site costs unless advertised as a 'fixed price package'. Driveway size based on builder's preferred siting. Check with your local builder for builder's standard range and inclusions. Photographs may include optional features or items that are not supplied by Hotondo Homes. Hotondo Homes reserves the right to change plans, specifications, materials and suppliers without notice. For more information visit your local builder or hotondo.com.au.

